

Key:

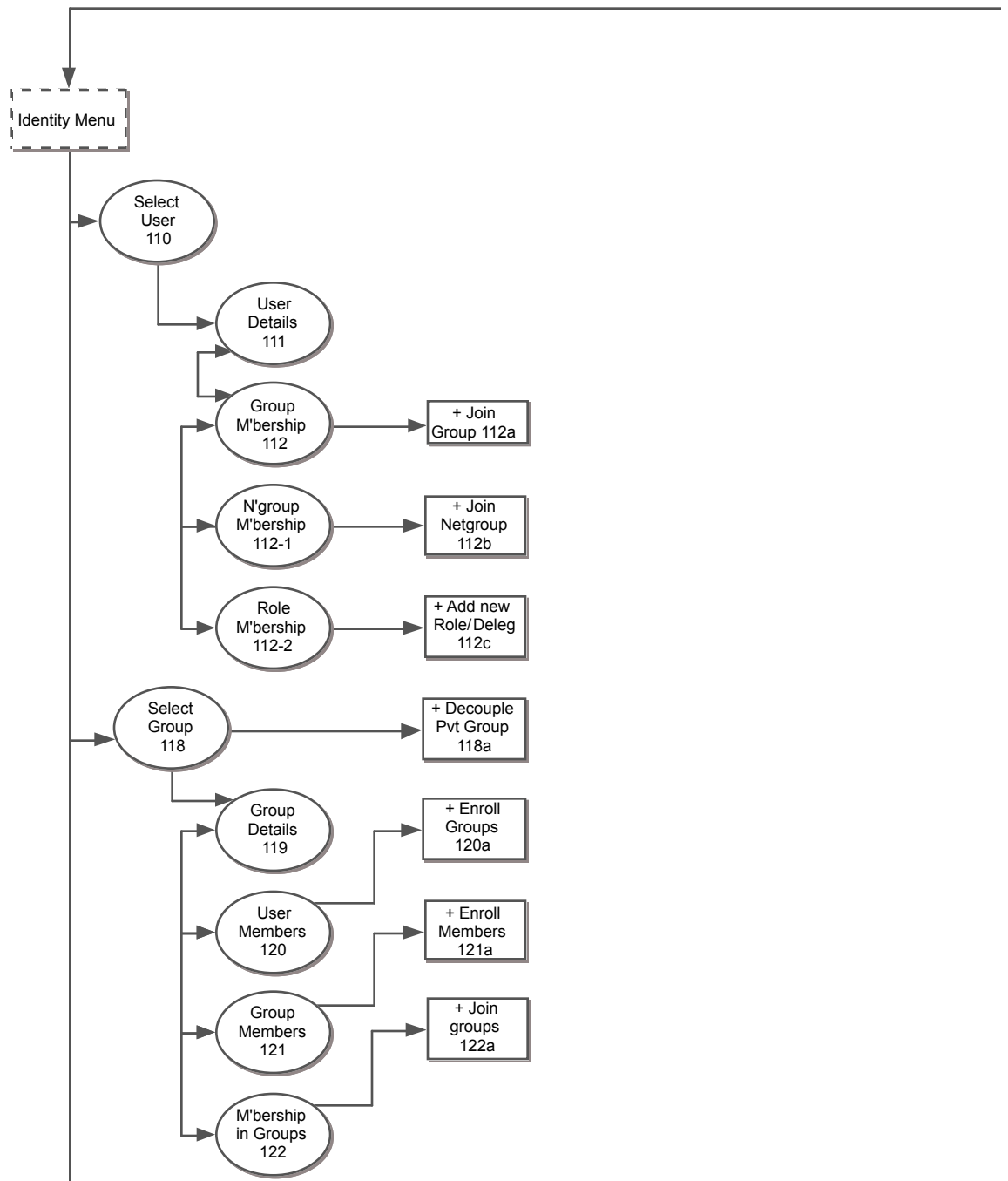
Logical Grouping - not a page

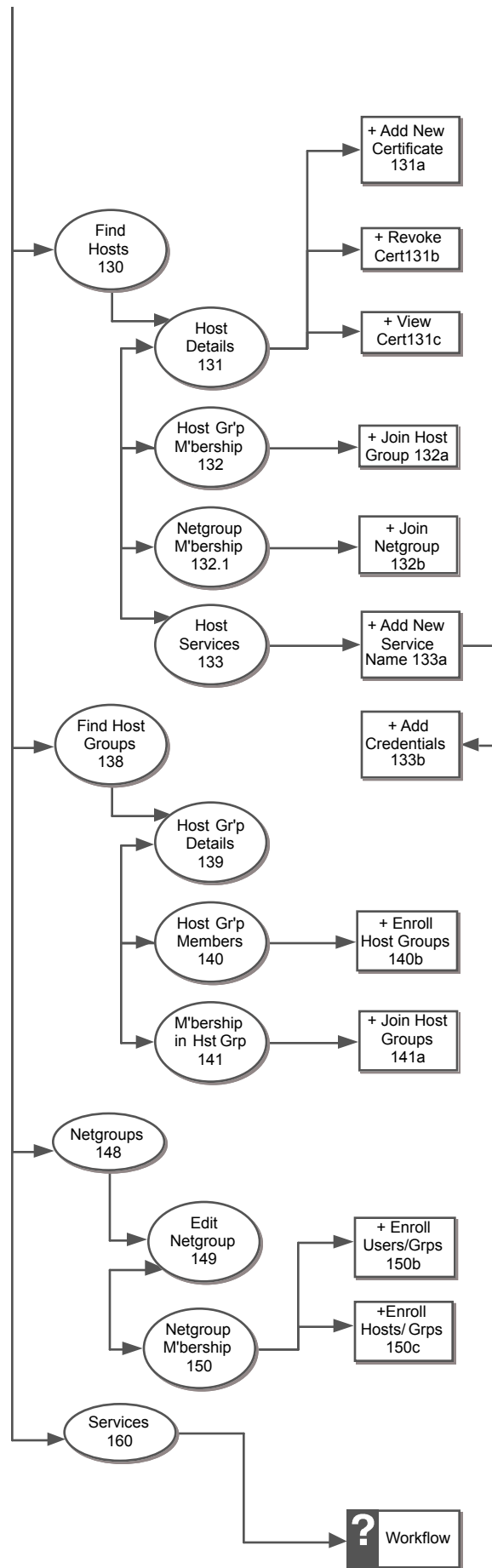
Regular Page

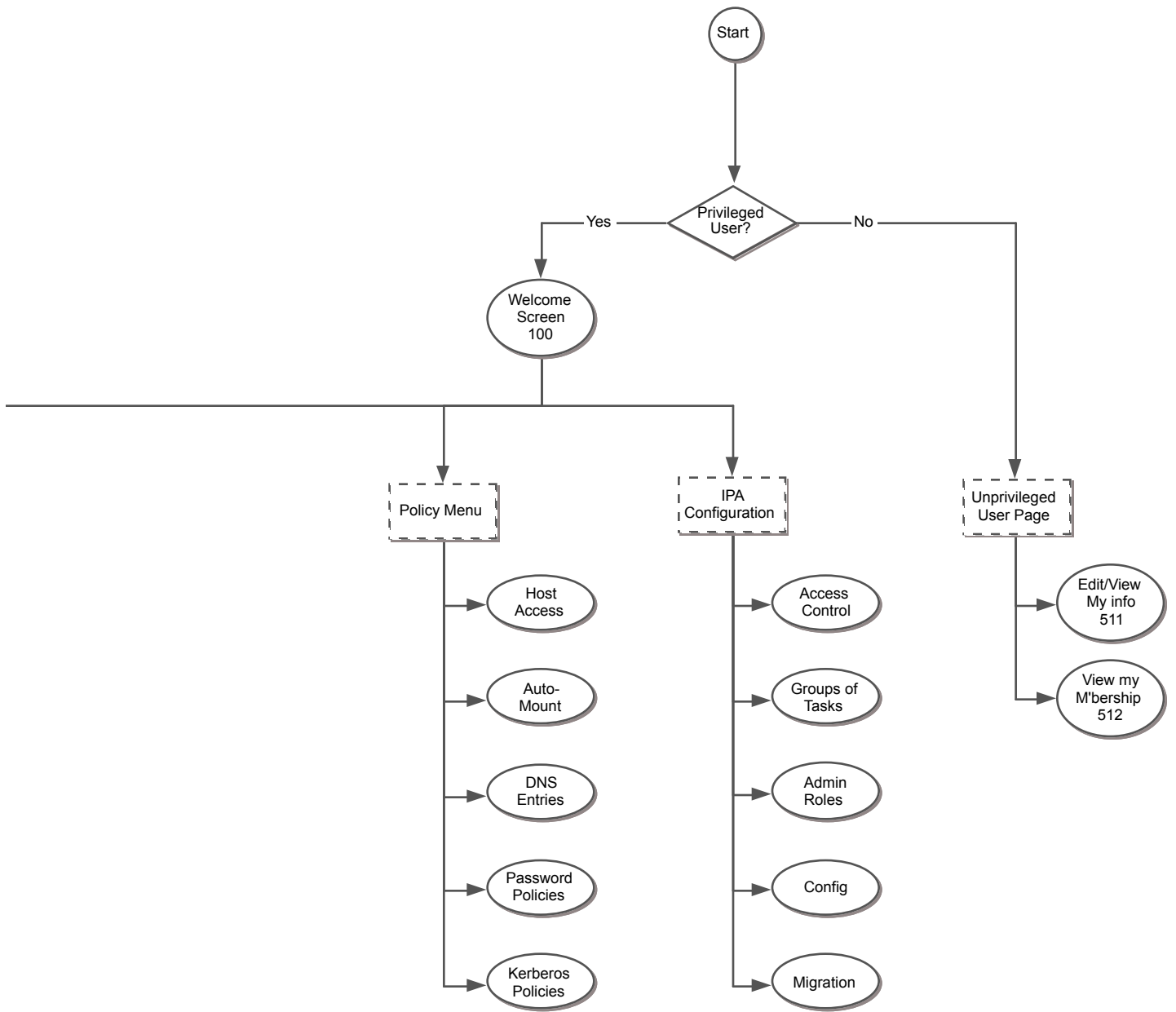
Modal form above screen

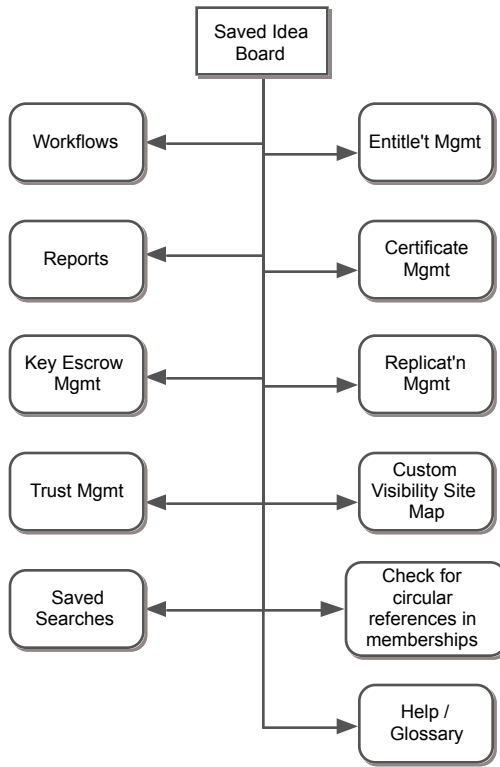
? As yet un-specified

Date: 22-June-2010









Find Users  
Screen 110

Identities Policies IPA Config Banner

Manage: Users Groups Hosts Host Groups Services Netgroups

Select User:

Find  Add User

Login ID	First Name	Last Name	eMail	Phone	Job Title	Options
						<input type="button" value="D"/> <input type="button" value="U"/> <input type="button" value="G"/> <input type="button" value="J"/> <input type="button" value="-"/>
						<input type="button" value="D"/> <input type="button" value="U"/> <input type="button" value="G"/> <input type="button" value="J"/> <input type="button" value="-"/>

Message Area

Details       Memberships in Groups  
 Memberships in Netgroups  
 Roles       Delete User

User Details  
111



Identities	Policies	IPA Config	Banner
------------	----------	------------	--------

Manage:	Users	Groups	Hosts	Host Groups	Services	Netgroups
---------	-------	--------	-------	-------------	----------	-----------

Managing User: Pat D. Bunny

Element:  Details  Memberships in Groups  Memberships in Netgroups  Roles

Reset

Save Changes

Work Area for Users





Memberships  
in Groups  
112

Identities Policies IPA Config Banner

Manage: Users Groups Hosts Host Groups Services Netgroups

Managing User: Pat D. Bunny

Element:  Details  Memberships in Groups  Memberships in Netgroups  Roles

Find Groups

Name	GID	Description	Options
			<input type="checkbox"/>

Message Area

Withdraw from Group



Join Groups  
Screen 112a

Add User Pat D. Bunny to Groups:

Find Groups

Results		Prospective Groups to join
Second floor group	=>	
Management Group	=>	

Cancel      Join Groups







Memberships  
in Netgroups  
112-1

Identities Policies IPA Config Banner

Manage: Users Groups Hosts Host Groups Services Netgroups

Managing User: Pat D. Bunny

Element:  Details  Memberships in Groups  Memberships in Netgroups  Roles Reset Save Changes

Find Netgroups + Join Groups

Name	GID	Description	Options
			<input type="checkbox"/>

*Message Area*

Withdraw from Netgroup



Add Netgroup  
Screen 112b

Add User Pat D. Bunny to Netgroups :

Results		Prospective Netgroups to join
Second floor netgroup	=>	
Management netgroup	=>	

Roles  
112-2

Identities Policies IPA Config Banner

Manage: Users Groups Hosts Host Groups Services Netgroups

Managing User: Pat D. Bunny

Element:  Details  Memberships in Groups  Memberships in Netgroups  Roles

Name	GID	Description	Options
			<input type="button" value="-"/>

*Message Area*

Remove Role



Assign Roles  
Screen 112c

Assign Roles to User Pat D. Bunny

Results		Prospective Roles to Assign
Role number 1	=>	
Delegation 17	=>	





Find Groups  
Screen 118

Identities Policies IPA Config Banner

Manage: Users Groups Hosts Host Groups Services Netgroups

Select Group:

Find  Add Group

Name	GID	Description	Options
			<input type="button" value="D"/> <input type="button" value="U"/> <input type="button" value="G"/> <input type="button" value="J"/> <input type="button" value="-"/>
			<input type="button" value="D"/> <input type="button" value="U"/> <input type="button" value="G"/> <input type="button" value="J"/> <input type="button" value="-"/>

Show Private Groups Message Area

Details  Memberships in Groups  
 User Members  
 Group Members  Delete Group





Find Groups  
118 - alt

Identities Policies IPA Config **Banner**

Manage: Users Groups Hosts Host Groups Services Netgroups

Select Group:

Find

Name	GID	Description	Options
			<input type="checkbox"/> DC
			<input type="checkbox"/> DC

Show Private Groups Message Area

DC Decouple Private Group



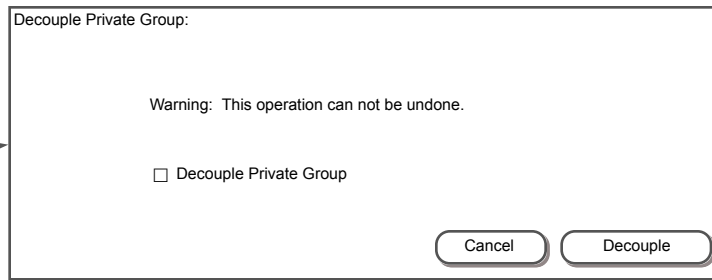
Decouple Private Group  
Screen 118a

Decouple Private Group:

Warning: This operation can not be undone.

Decouple Private Group

Cancel Decouple



Group Details  
119

Identities Policies IPA Config Banner

Manage: Users Groups Hosts Host Groups Services Netgroups

Managing Group: Admin

Element:  Details  User Members  Group Members  Memberships in Groups

Group Name:   
Description:   
 This is a POSIX Group  
 Enter GID manually:





User Members  
Screen 120

Identities Policies IPA Config Banner

Manage: Users Groups Hosts Host Groups Services Netgroups

Managing Group: Admin

Element:  Details  User Members  Group Members  Memberships in Groups

Login ID	First Name	Last Name	Job Title	Actions
				<input type="button" value="-"/>

*Message Area*



Add User Members  
Screen 120a

Add User Members to Group Admin:

Results		Prospective User Members
John Abel	=>	
Mary Baker	=>	
Jim Cat		





Group Members  
Screen 121

Identities Policies IPA Config **Banner**

Manage: Users Groups Hosts Host Groups Services Netgroups

Managing Group: Admin

Element:  Details  User Members  Group Members  Memberships in Groups

Name	GID	Description	Options
			<input type="checkbox"/>

*Message Area*

Remove Group Member



Enroll Groups  
Screen 121a

Add Group Members to Group Admin:

Results		Prospective Group Members
Second floor group	=>	
Management Group	=>	

Group Members  
Screen 122

Identities Policies IPA Config Banner

Manage: Users Groups Hosts Host Groups Services Netgroups

Managing Group: Admin

Element:  Details  User Members  Group Members  Memberships in Groups

Name	GID	Description	Options
			<input type="button" value="-"/>

Message Area



Join Groups  
Screen 122a

Add Group Admin to other groups:

Results		Prospective Groups to join
Second floor group	=>	
Management Group	=>	

Identities Policies IPA Config **Banner**

Manage: Users Groups **Hosts** Host Groups Services Netgroups

Select Host:

Find  Add Host

Host Name	Comment	Client Version	Key?	Options
				<input type="button" value="D"/> <input type="button" value="G"/> <input type="button" value="N"/> <input type="button" value="S"/> <input type="button" value="-"/>
				<input type="button" value="D"/> <input type="button" value="G"/> <input type="button" value="N"/> <input type="button" value="S"/> <input type="button" value="-"/>

*Message Area*

Details  Host Services  
 Memberships in Host Groups  
 Memberships in Netgroups  Delete Host

Identities Policies IPA Config Banner

Manage: Users Groups Hosts Host Groups Services Netgroups

Managing Host: Zimbrmail

Element:  Details  Memberships in Host Groups  Memberships in Netgroups  Host Services

Host Details:

Fully-Qualified Domain Name:   
Enrolled By:   
Date:   
Description:

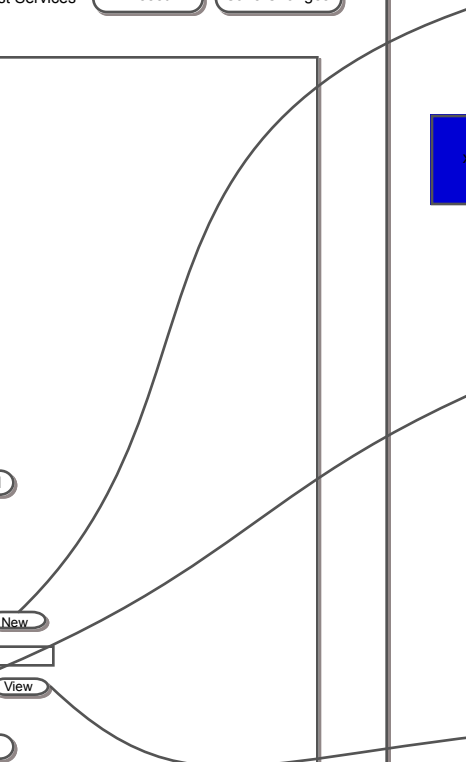
Enrollment:

One-Time Password:    
Status:  Enrolled  Unenrolled

Credentials:

Certificate: Name:    
Status:  Present  Revoked

Kerberos Key: Status:  Present  Not Present





Issue New Cert  
Screen 131a

Issue New Certificate

Subject Name:

Expiration:

Certificate Signing Request:

Get (Download) Certificate when done.

Revoke Cert  
Screen 131b

Revoke Certificate

Select Reason:

View Cert  
Screen 131c

**Issued To:**

Common Name	abcd
Organization	<asdf>
Organizational Unit	Apache
Serial Number	12:34

**Issued By:**

Common Name	abd
Organization	abcd
Organizational Unit	<asdf>

**Dates:**

Issued On:	7-Mar-2010
Expires On:	1-Jan=2030

**Fingerprints**

SHA1 Fingerprint	114312431243134
MD5 Fingerprint	123414351434353452



Host Group  
Memberships  
Screen 132

Identities Policies IPA Config Banner

Manage: Users Groups Hosts Host Groups Services Netgroups

Managing Host: ZimbraMail

Element:  Details  Memberships in Host Groups  Memberships in Netgroups  Host Services

Name	Description	Options
		<input type="button" value="-"/>

Message Area

Withdraw from Host Group



Add Host Group  
Screen 132a

Add Host ZimbraMail to Host Groups

Results	Prospective Host groups to join
Second floor host group Management Host Group	





Netgroup  
Memberships  
Screen 132.1

Identities Policies IPA Config Banner

Manage: Users Groups Hosts Host Groups Services Netgroups

Managing Host: ZimbraMail

Element:  Details  Memberships in Host Groups  Memberships in Netgroups  Host Services

Name	Description	Options
		<input type="checkbox"/>

Message Area

Withdraw from Netgroup



Join Netgroup  
Screen 132b

Add Host ZimbraMail to Netgroups

Results	Prospective Netgroups to join
Second floor netgroup Management netgroup	



Host Services  
Screen 133

Identities Policies IPA Config Banner

Manage: Users Groups Hosts Host Groups Services Netgroups

Managing Host: ZimbraMail

Element:  Details  Memberships in Host Groups  Memberships in Netgroups  Host Services

Name	Description	Options
- Apache - Web App 1 using auth - MS Exchange		<input type="button" value="-"/>

*Message Area*

Remove Host Service



Add Services  
Screen 133a

Add Host Services to Host ZimbraMail

Results	Services to add
Bonjour (New Service)	=> Cups
Apache	=> Bonjour (New Service)
Cups	=>
Wiki	=>

Add Cert/Key  
133b

Credentials

Cups on Zimbramail:

Certificate: Name:

Status:  Present  Revoked

Kerberos Key: Status:  Present  Not Present

Bonjour on Zimbramail (new service):

Certificate: Name:

Status:  Present  Revoked

Kerberos Key: Status:  Present  Not Present

New  
131-a

Revoke  
131-b

View  
131-c



Find Host Groups  
Screen 138

Identities Policies IPA Config Banner

Manage: Users Groups Hosts Host Groups Services Netgroups

Select Host Group:

Find  Add Host Group

Name	Description	Options
		<input type="button" value="D"/> <input type="button" value="H"/> <input type="button" value="M"/> <input type="button" value="J"/> <input type="button" value="-"/>
		<input type="button" value="D"/> <input type="button" value="H"/> <input type="button" value="M"/> <input type="button" value="J"/> <input type="button" value="-"/>

Message Area

Details  
 Host Group Members  
 Memberships in Host Groups  Delete Host Group



Host Group Details  
Screen 139

Identities Policies IPA Config Banner

Manage: Users Groups Hosts Host Groups Services Netgroups

Managing Host Group: Dev-cluster-2

Element:  Details  My Host Group Members  Membership in other Host Groups

Host Group Name:

Description:



Identities Policies IPA Config **Banner**

Manage: Users Groups Hosts **Host Groups** Services Netgroups

Managing Host Group: Dev-cluster-2

Element:  Details  My Host Group Members  Membership in other Host Groups

Name	Description	Options
		<input type="button" value="-"/>

*Message Area*



Enroll Groups  
Screen 140b

Enroll groups into membership in Host Group Admin:

Results		Prospective Host Group Members
Second floor host group	=>	
Management host Group	=>	




Identities Policies IPA Config Banner

Manage: Users Groups Hosts Host Groups Services Netgroups

Managing Host Group: Dev-cluster-2

Element:  Details  My Host Group Members  Membership in other Host Groups



Name	Description	Options
		<input type="button" value="-"/>

*Message Area*

Withdraw from Host Group



Join Host Groups  
Screen 141a

Enroll Host Group Admin into membership in the following:

Results		Host Groups to join
Second floor host group	=>	
Management host Group	=>	

